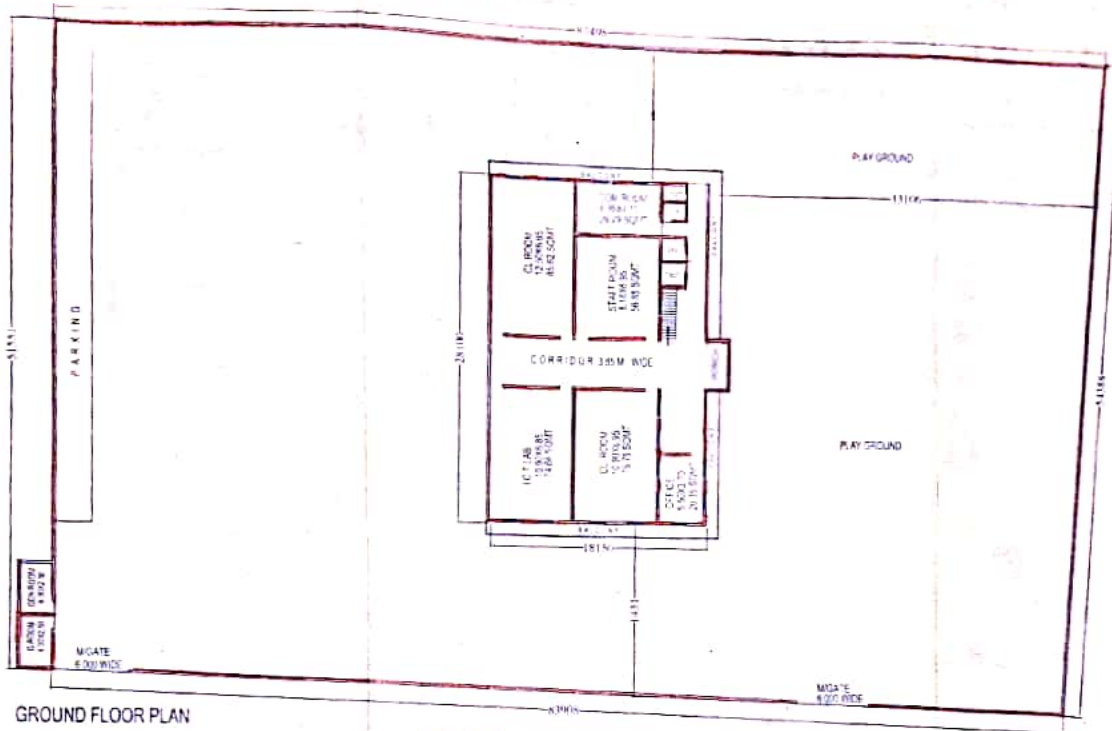
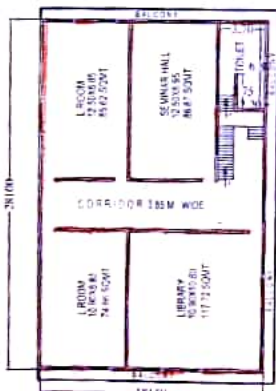


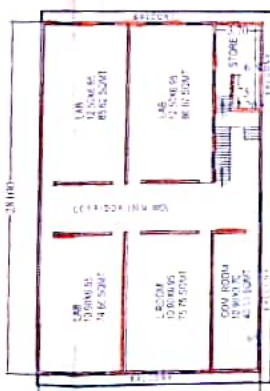
PT. K. C. SHARMA MEMORIAL SOCIETY FOR EDUCATION & RESEARCH AT KHASRA NO. 227/665  
 DHOLAPLASH B.ED. COLLEGE AT VILLAGE DHOLAPLASH DISTT. ALWAR (RAJ.)  
 COLOUR SHOWN IN RED



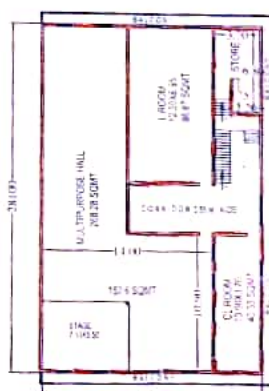
GROUND FLOOR PLAN



FIRST FLOOR PLAN



SECOND FLOOR PLAN



THIRD FLOOR PLAN

*(Signature)*  
 कनिष्ठ अभियन्ता  
 सापिण्डिको उपखण्ड-कलासेज

DHOLAPLASH B. ED. COLLEGE  
 TOTAL LAND AREA= 3000 SQM  
 TOTAL BUILTUP AREA = 2060.0 SQM.

COVD. AREA ON G.FLOOR = 530.0 SQ.M.  
 COVD. AREA ON 1st.FLOOR = 510.0 SQ.M.  
 COVD. AREA ON 2nd.FLOOR = 510.0 SQ.M.  
 COVD. AREA ON 3rd.FLOOR = 510.0 SQ.M.

**PUSHP RAJ KALLA**  
 Building Designer  
 10, Vikas Path, Alwar  
 Lic. No. ....  
 Mob. 9314072...

संयोजक  
 संरक्षक

*(Signature)*  
**CHAIRMAN**  
 PT. K. C. Sharma Memorial Society  
 For Edu. & Research  
 DHOLAPLASH (U.S.)

PRODUCED BY AN AUTODESK EDUCATIONAL PRODUCT

PT. K. C. SHARMA मीहवातपुर  
 10 मीहवातपुर (अलवर)